

KINDERHAUS
SCHANBACH
ALBSTRASSE 20



Kinderhaus

1. Baukörper
2. Rundgang
3. Außenbereich

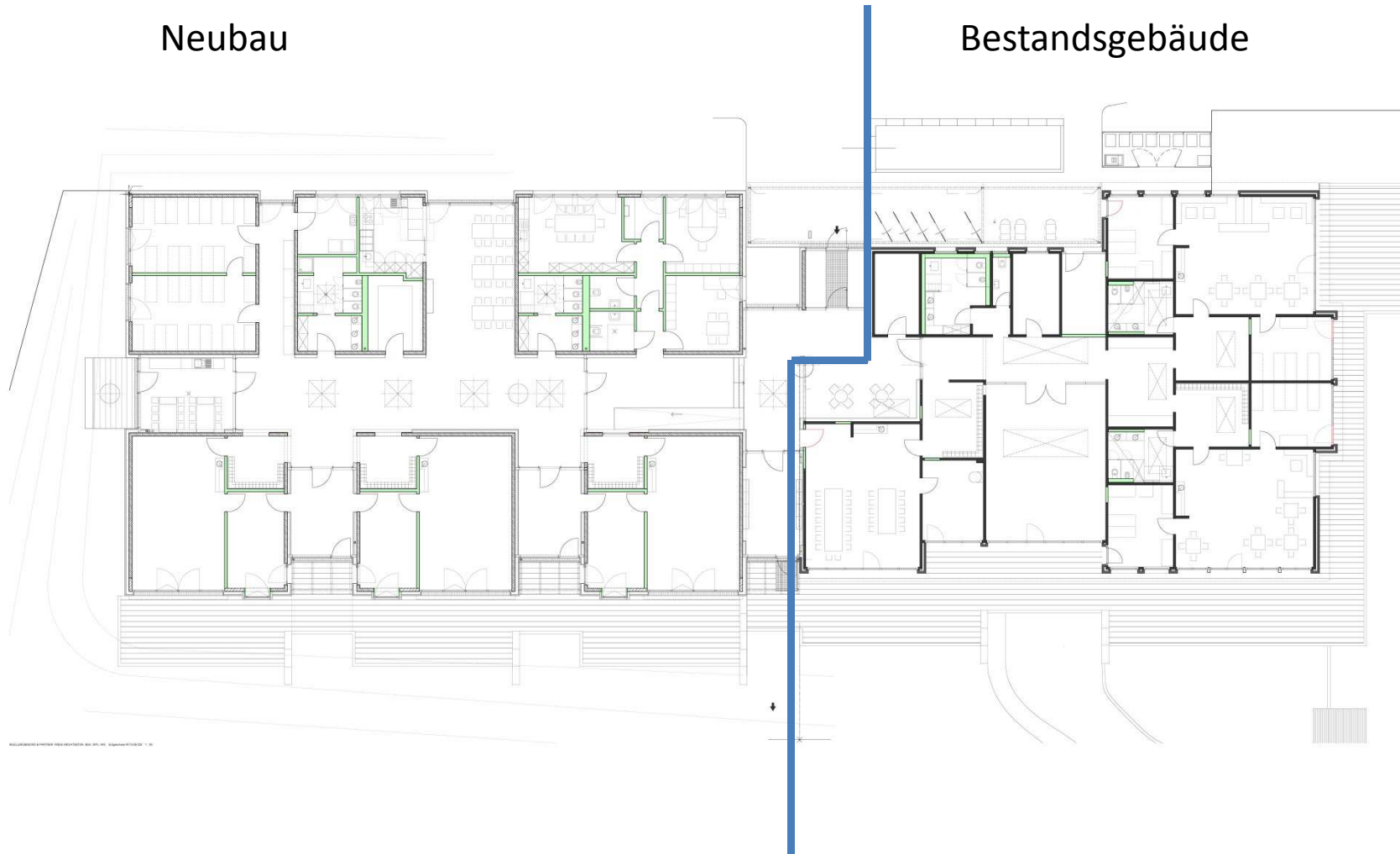
Kinderhaus

1. Baukörper
2. Rundgang
3. Außenbereich



Neubau

Bestandsgebäude

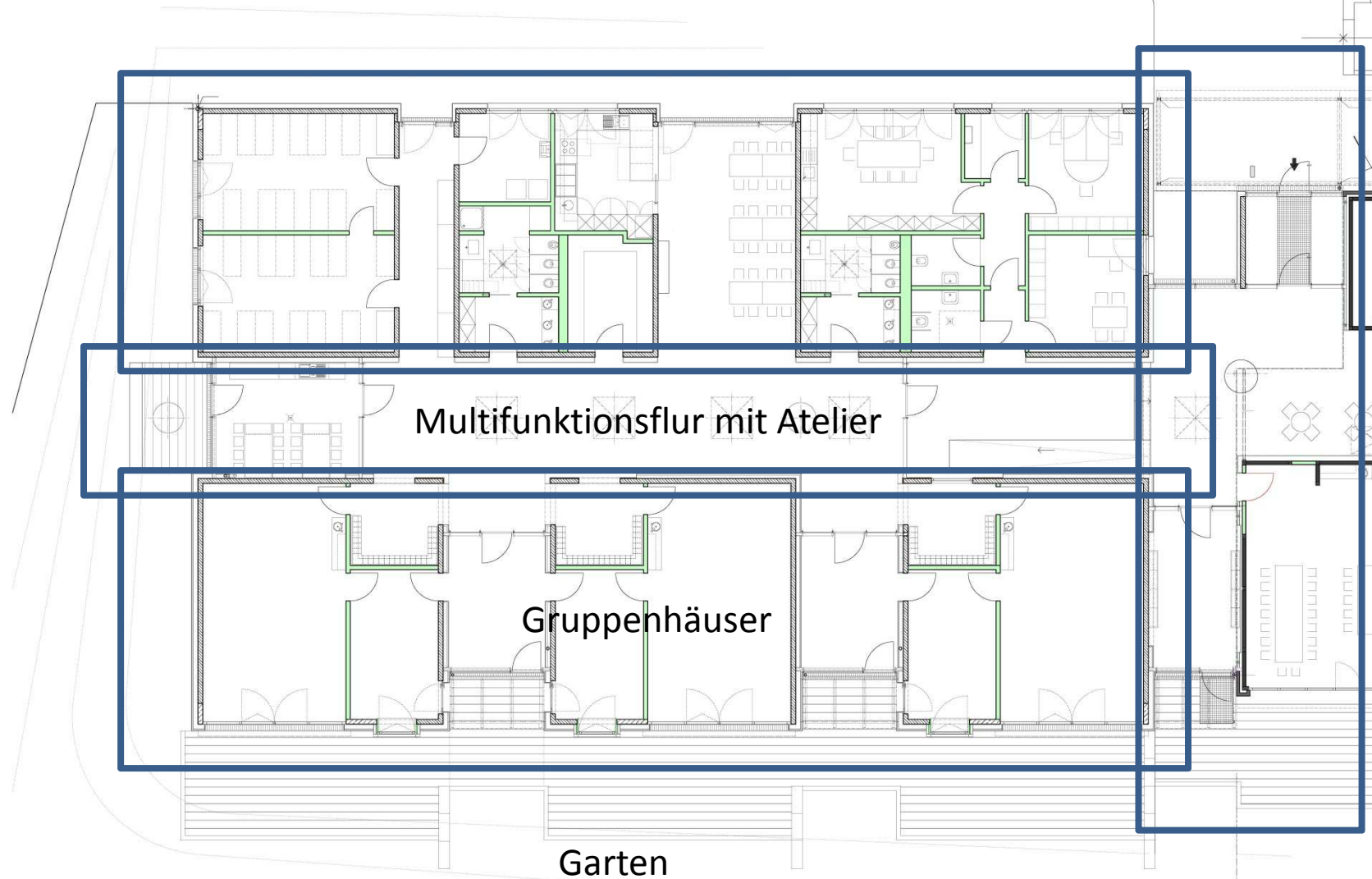


Ruhebereich

Mensa

Verwaltung

Zentraler Eingang

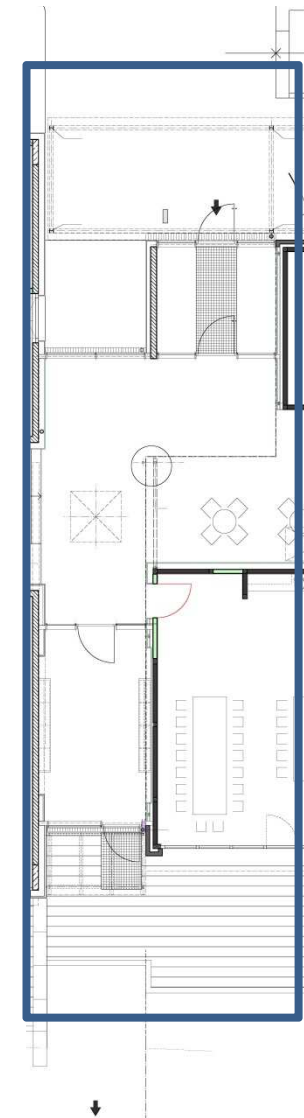


Kinderhaus

1. Baukörper
2. Rundgang
3. Außenbereich

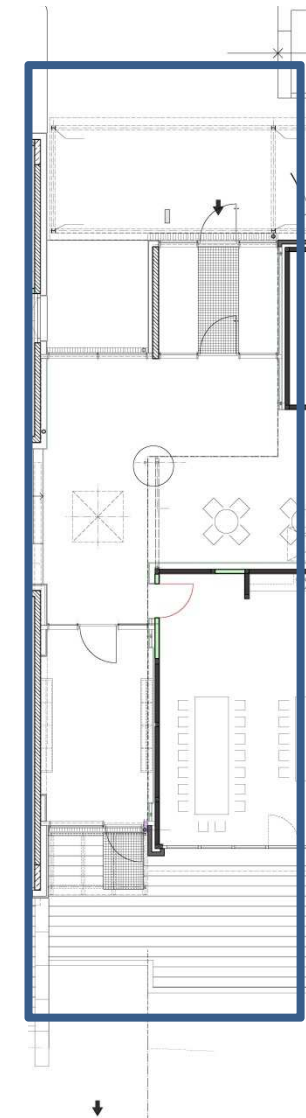


Zentraler Eingang



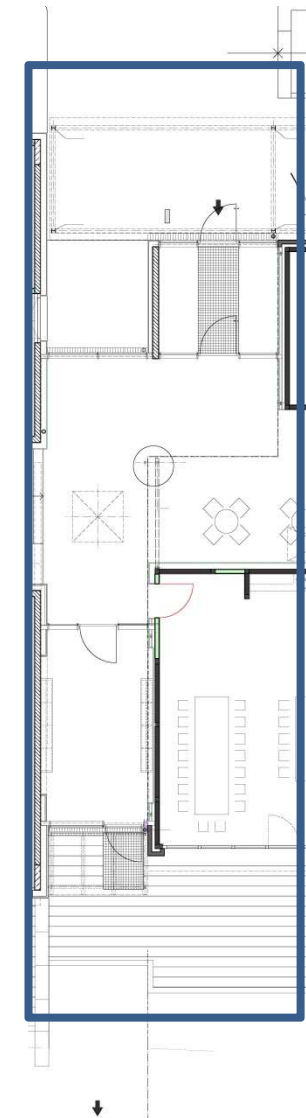


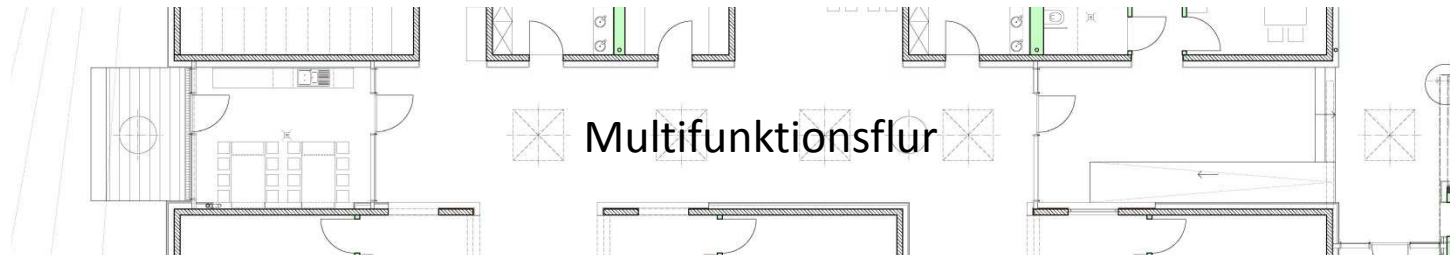
Zentraler Eingang

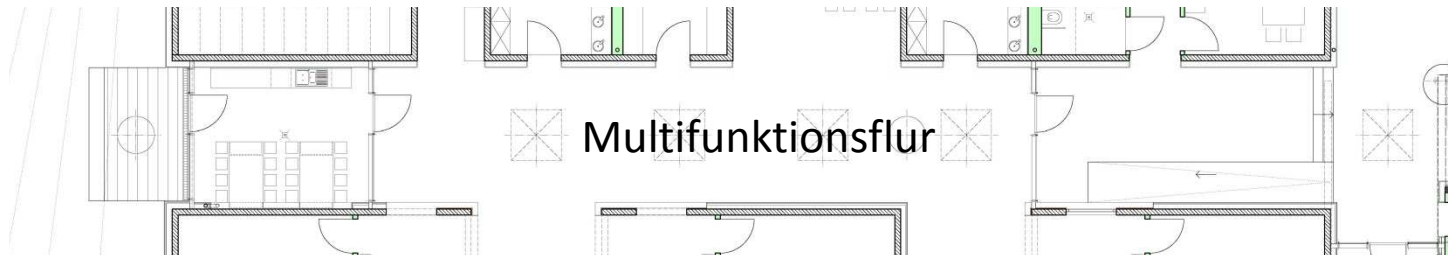


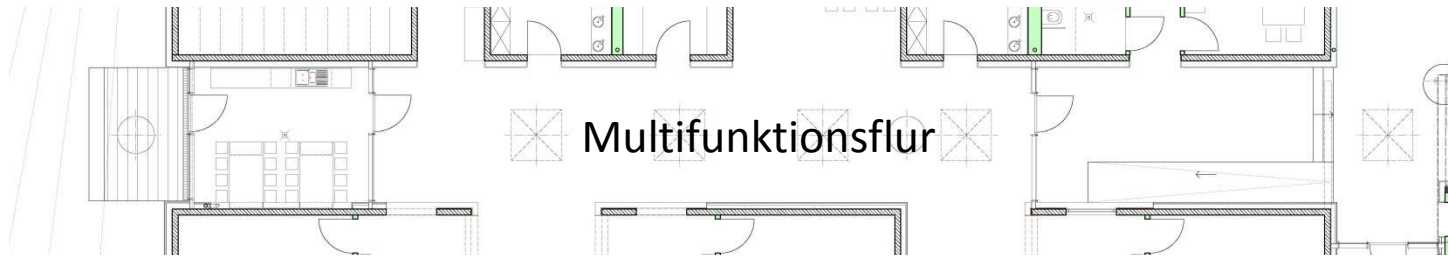


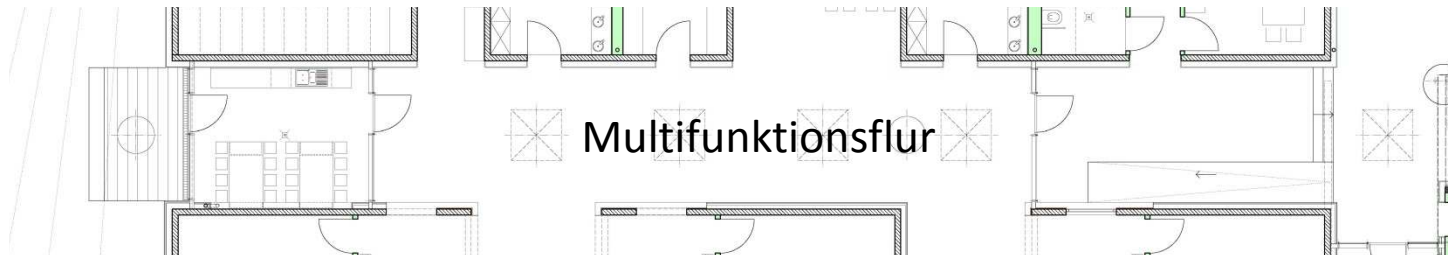
Zentraler Eingang











Ruhebereich Mensa Verwaltung

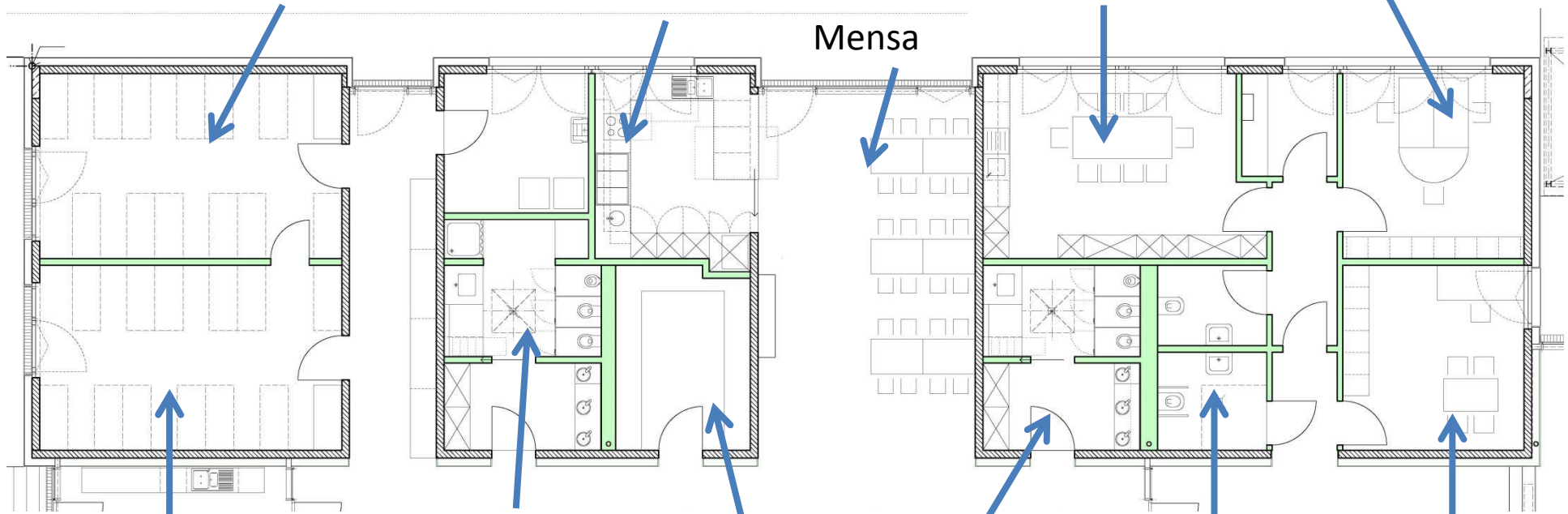
Snoezelenraum

Küche

Mensa

Personalraum

Büro



Schlafen

Kinder-WC
+ Wickeln
+ Dusche

Materiallager

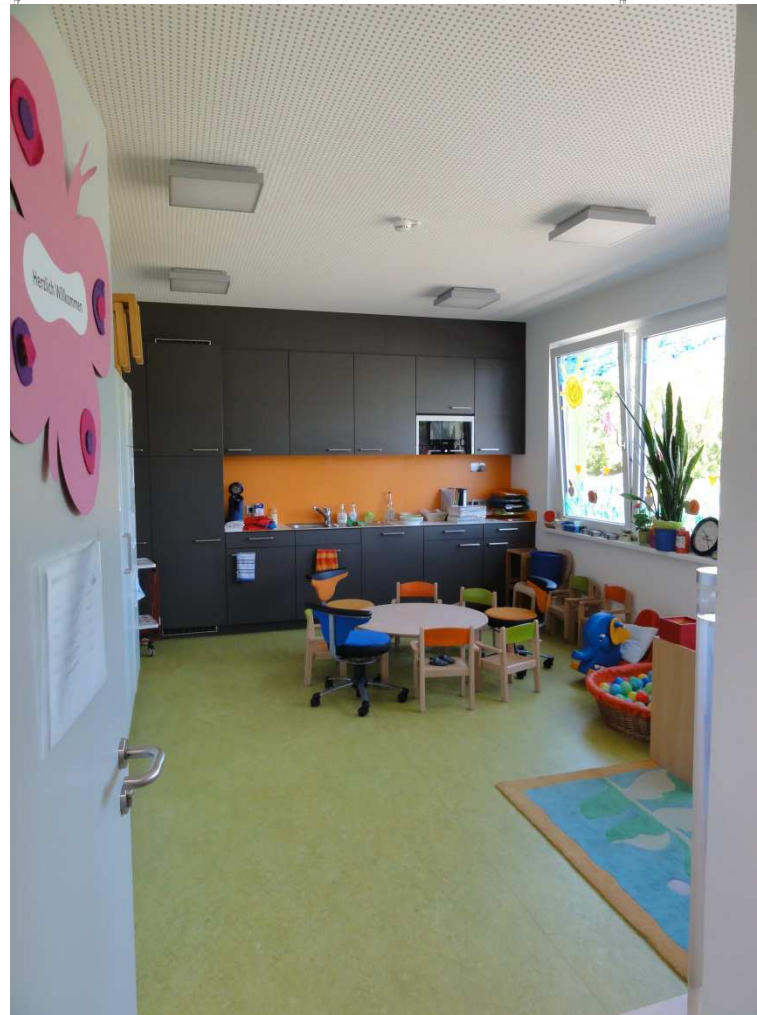
Kinder-WC
+ Wickeln

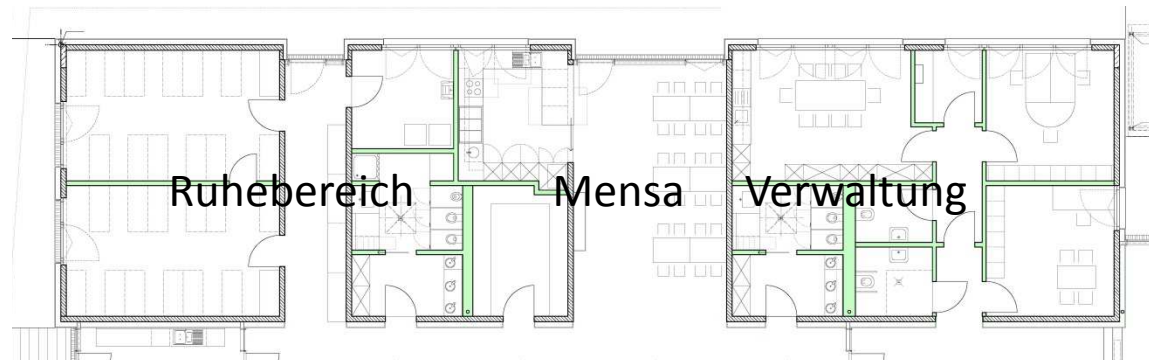
Behinderten-WC
Personal-WC

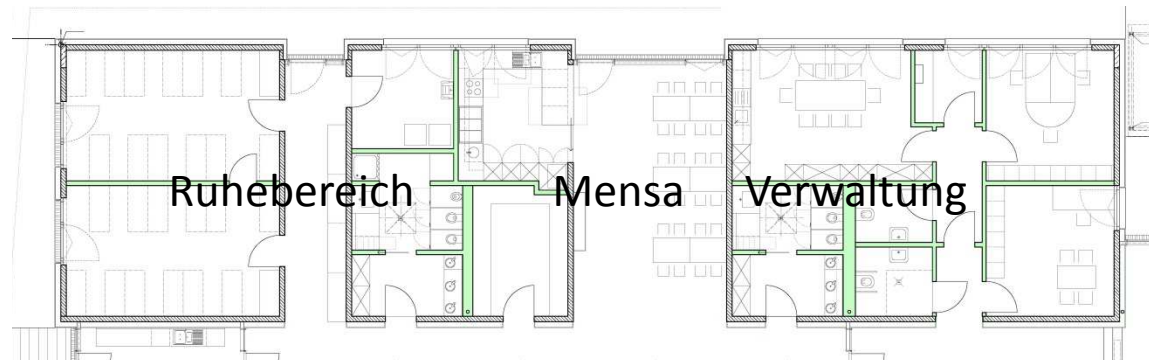
Elternzimmer

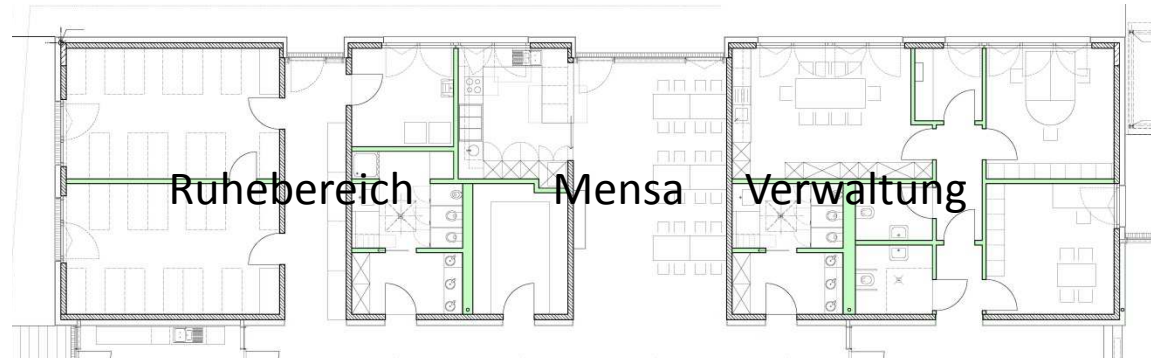


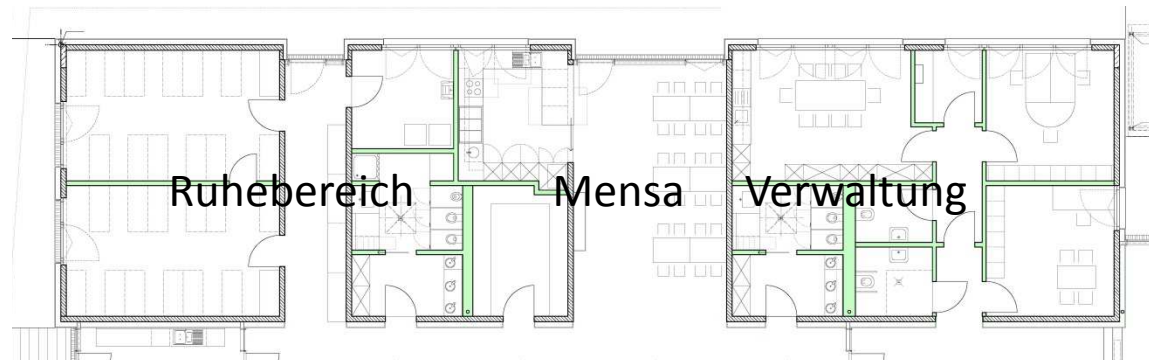










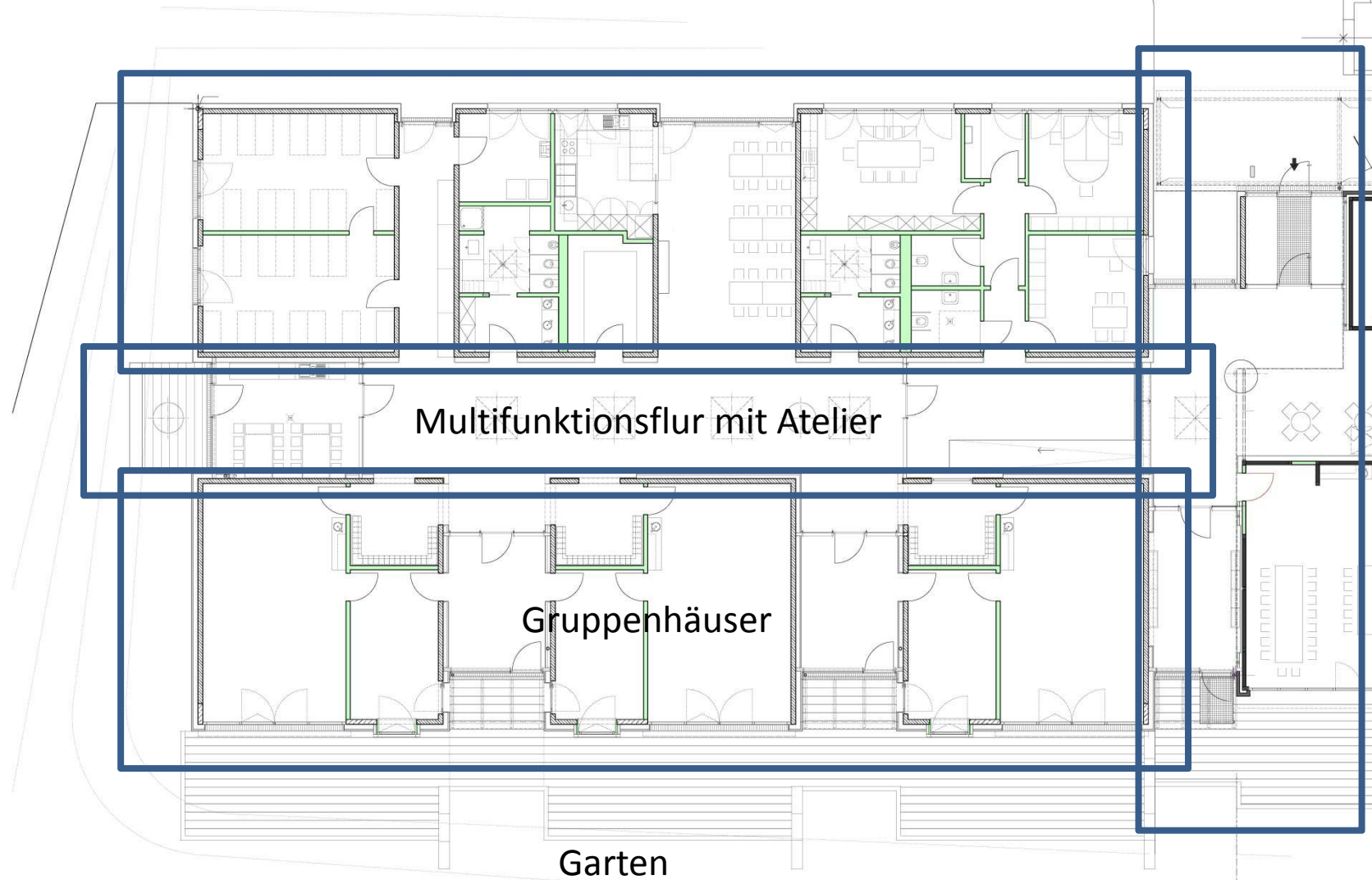


Ruhebereich

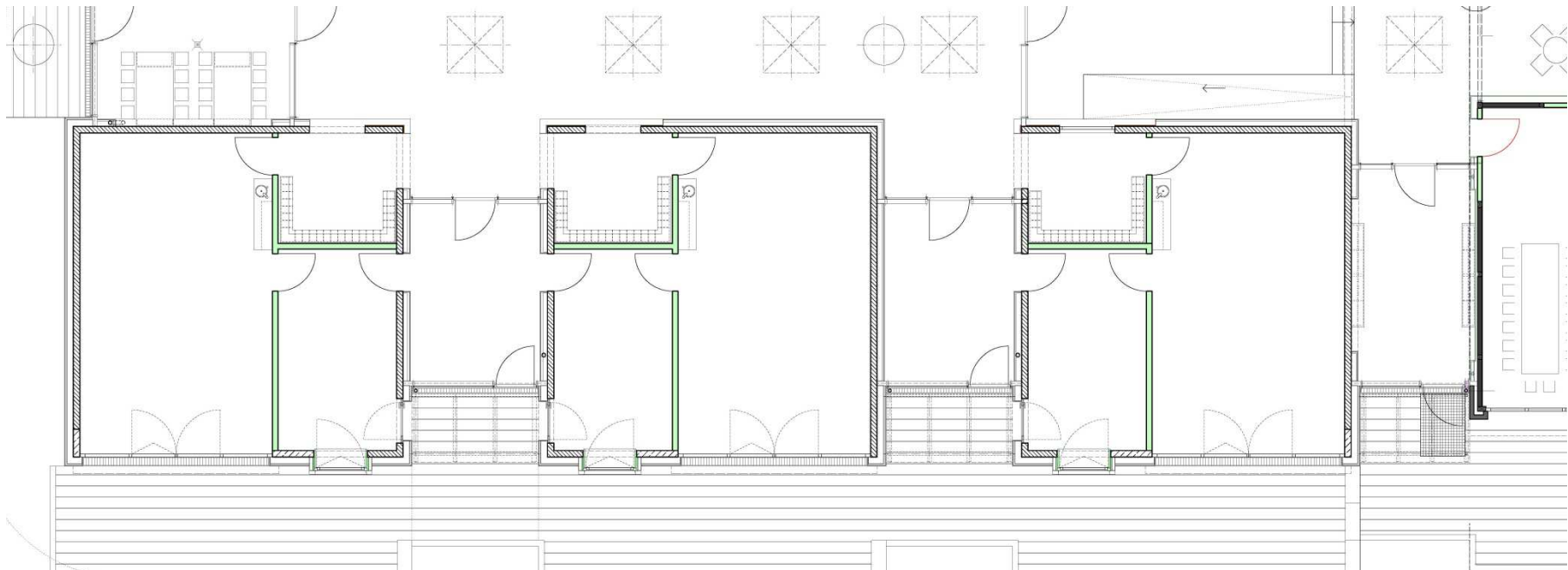
Mensa

Verwaltung

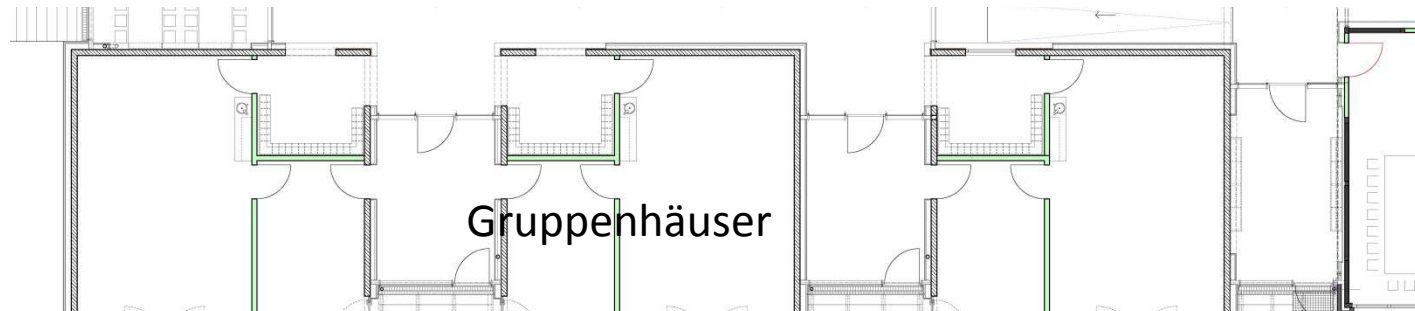
Zentraler Eingang

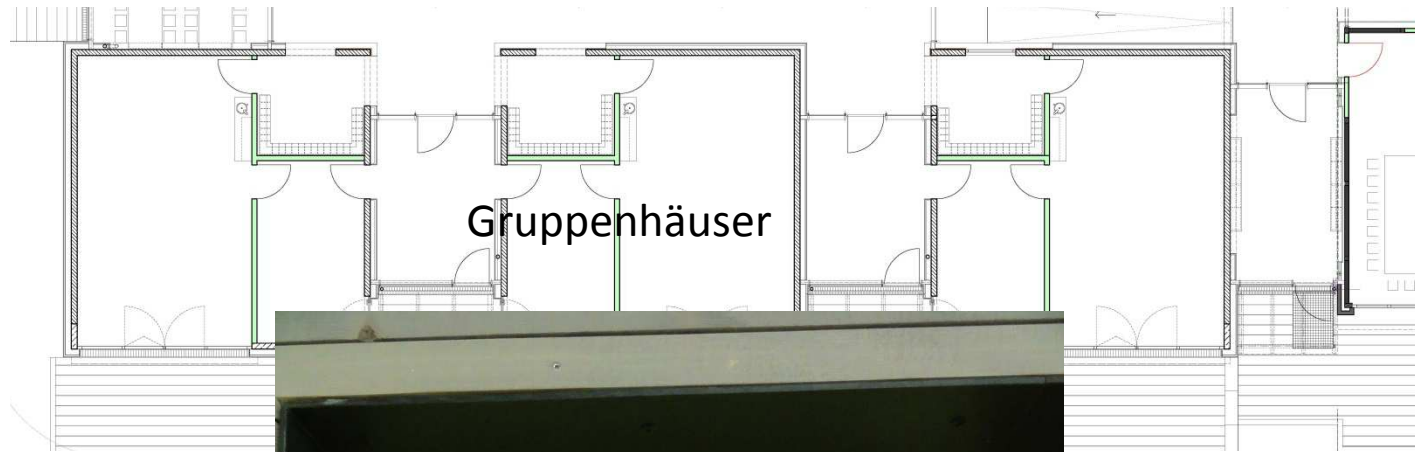


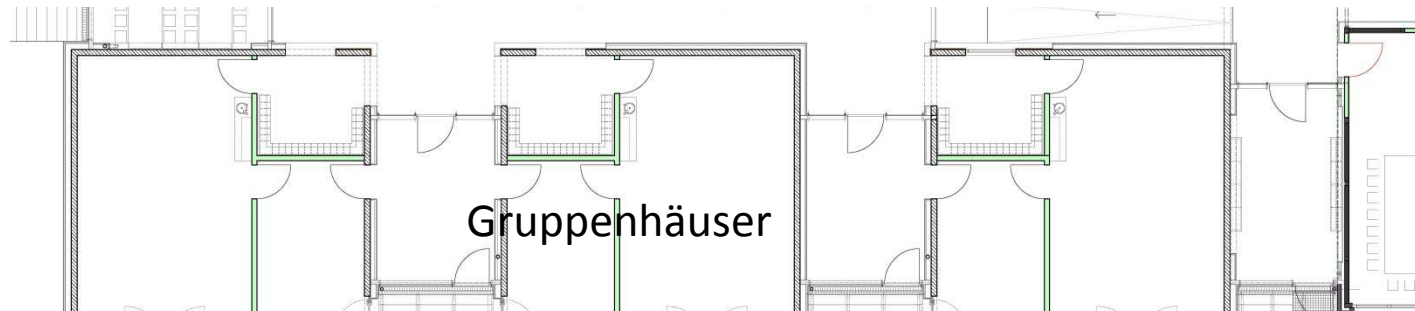
Gruppenhäuser

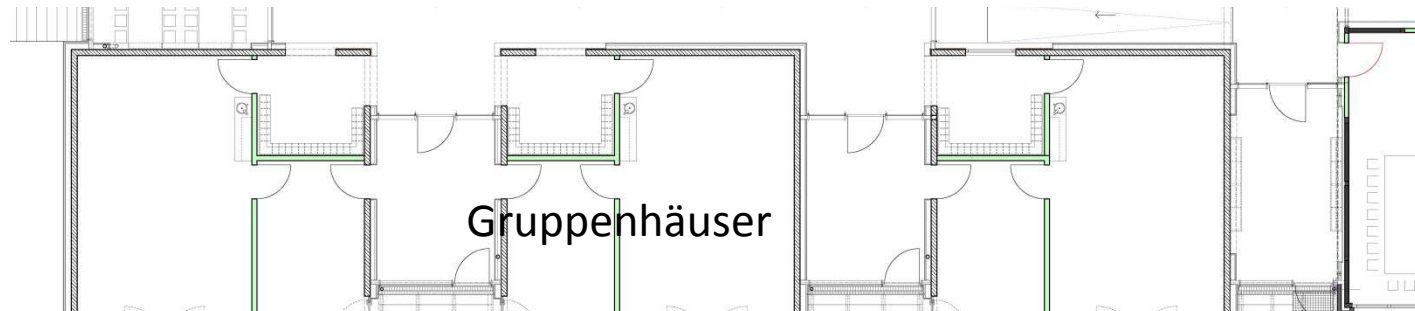


Garten



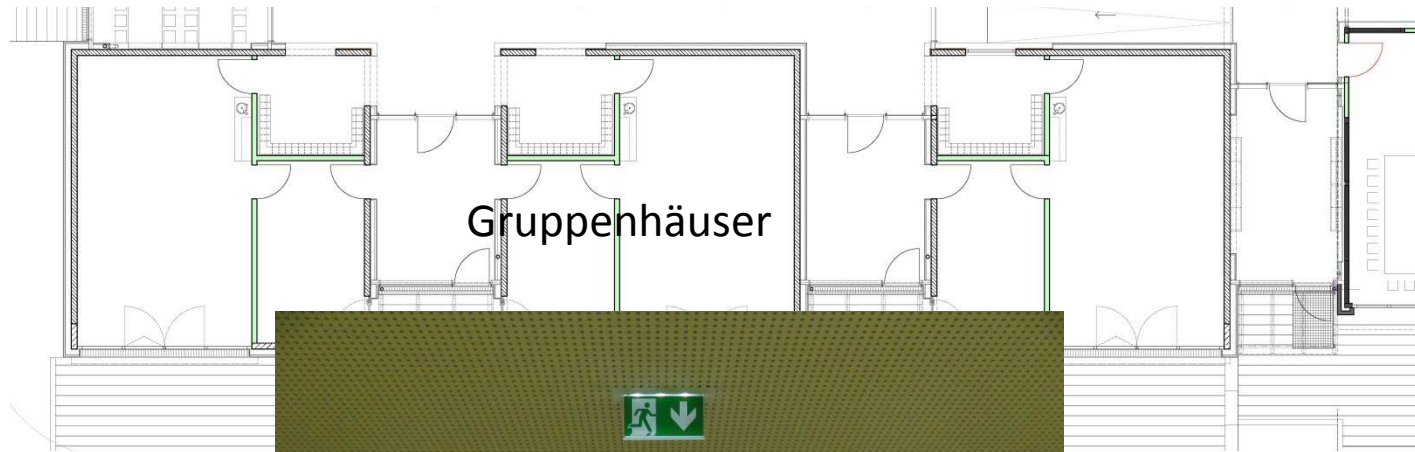






Gruppenhäuser





Kinderhaus

1. Baukörper
2. Rundgang
3. Außenbereich













Maßnahmen in den Kindergärten Aichelberg und Aichschieß

- Schlaf- und Sanitärräume Kiga Aichschieß 2013
- Sanierung Heizkörper Kiga Aichschieß 2014
- Sanierung Personal-WC und Wickelbereich 2016
- Sanierung WC Bereich Kiga Aichelberg 2014
- Sanierung zentrale Eingangshalle Kiga Aichelberg 2015

KINDERHAUS
SCHANBACH
ALBSTRASSE 20

